



Industry Update
Media and Entertainment
Q1 2024

1

Financial Performance

Size Profile, LTM Financials, Forward Estimates

(USD in millions, except per share data)

Company Name	Ticker	Size Profile				LTM Operating Data		Forward Estimates	
		Price at 03/31/24	% of 52 Week High	TEV	Total Assets	LTM Revenue	LTM EBITDA	2024 Est. Revenue	2024 Est. EBITDA
Broadcasting									
Warner Bros. Discovery, Inc.	WBD	\$8.73	56.1%	\$65,411	\$122,757	\$41,321	\$7,409	\$41,550	\$9,912
Gray Television, Inc.	GTN	\$6.32	59.1%	\$7,478	\$10,640	\$3,281	\$789	\$3,866	\$1,331
Stolt-Nielsen Limited	SNI	\$36.93	94.1%	\$3,899	\$4,947	\$2,819	\$729	\$2,876	\$831
Entravision Communications Corporation	EVC	\$1.64	25.3%	\$377	\$866	\$1,107	\$36	\$906	\$68
Cable and Satellite									
AT&T Inc.	T	\$17.60	88.0%	\$288,593	\$399,428	\$122,317	\$42,345	\$123,587	\$44,646
AMC Networks Inc.	AMCX	\$12.13	57.8%	\$2,627	\$4,970	\$2,712	\$628	\$2,415	\$539
Amala Foods Plc	DISH	\$0.00	28.1%	\$2	\$0	\$0	N/A	\$0	N/A
Movies and Entertainment									
Netflix, Inc.	NFLX	\$607.33	95.7%	\$258,419	\$48,828	\$34,932	\$8,226	\$38,605	\$10,379
The Walt Disney Company	DIS	\$122.36	98.9%	\$253,860	\$197,774	\$88,935	\$15,595	\$93,035	\$18,254
AMC Entertainment Holdings, Inc.	AMC	\$3.72	6.8%	\$9,152	\$9,009	\$4,813	\$398	\$4,545	\$304
Lions Gate Entertainment Corp.	LGFA	\$9.95	82.3%	\$7,097	\$7,155	\$3,985	\$465	\$4,451	\$506
Cinemark Holdings, Inc.	CNK	\$17.97	90.5%	\$4,884	\$4,837	\$3,067	\$581	\$2,886	\$483

Source: Capital IQ

Financial Performance (cont.)

Size Profile, LTM Financials, Forward Estimates

(USD in millions, except per share data)

Company Name	Ticker	Size Profile			LTM Operating Data		Forward Estimates		
		Price at 03/31/24	% of 52 Week High	TEV	Total Assets	LTM Revenue	LTM EBITDA	2024 Est. Revenue	2024 Est. EBITDA
Publishing									
The New York Times Company	NYT	\$43.22	86.7%	\$6,451	\$2,715	\$2,399	\$383	\$2,555	\$425
The E.W. Scripps Company	SSP	\$3.93	35.7%	\$3,751	\$5,410	\$2,293	\$395	\$2,517	\$567
Gannett Co., Inc.	GCI	\$2.44	67.8%	\$1,575	\$2,181	\$2,664	\$244	\$2,570	\$273
Scholastic Corporation	SCHL	\$37.71	82.0%	\$1,054	\$1,715	\$1,643	\$100	\$1,696	\$191

Source: Capital IQ

2

Valuation Metrics

Return Profile, Trading Multiples

Company Name	Ticker	Return Profile					Trading Multiples		
		Return on Assets	Return on Equity	Revenue Growth	EBITDA Margin	EBITDA Growth	5-yr Beta	TEV / LTM Revenue	TEV / LTM EBITDA
Broadcasting									
Warner Bros. Discovery, Inc.	WBD	-0.3%	-6.5%	22.2%	17.9%	49.9%	1.5x	1.6x	8.8x
Gray Television, Inc.	GTN	2.6%	-2.8%	-10.7%	24.0%	-40.9%	1.6x	2.3x	9.5x
Stolt-Nielsen Limited	SNI	6.4%	15.7%	-1.9%	25.9%	9.6%	0.0x	1.4x	5.3x
Entertainment Communications Corporation	EVC	0.6%	-5.7%	15.8%	3.3%	-59.0%	1.1x	0.3x	10.4x
	Mean	2.3%	0.2%	6.3%	17.8%	-10.1%	1.0x	1.4x	8.5x
	Median	1.6%	-4.2%	6.9%	21.0%	-15.7%	1.3x	1.5x	9.2x
Cable and Satellite									
AT&T Inc.	T	4.1%	13.0%	0.9%	34.6%	-0.8%	0.7x	2.4x	6.8x
Amala Foods Plc	DISH	-70.5%	N/A	0.0%	0.0%	0.0%	-0.2x	N/A	N/A
AMC Networks Inc.	AMCX	6.1%	17.0%	-12.4%	23.2%	-8.2%	1.2x	1.0x	4.2x
	Mean	-20.1%	15.0%	-3.8%	19.3%	-3.0%	0.6x	1.7x	5.5x
	Median	4.1%	15.0%	0.0%	23.2%	-0.8%	0.7x	1.7x	5.5x

Source: Capital IQ

Valuation Metrics (cont.)

Return Profile, Trading Metrics

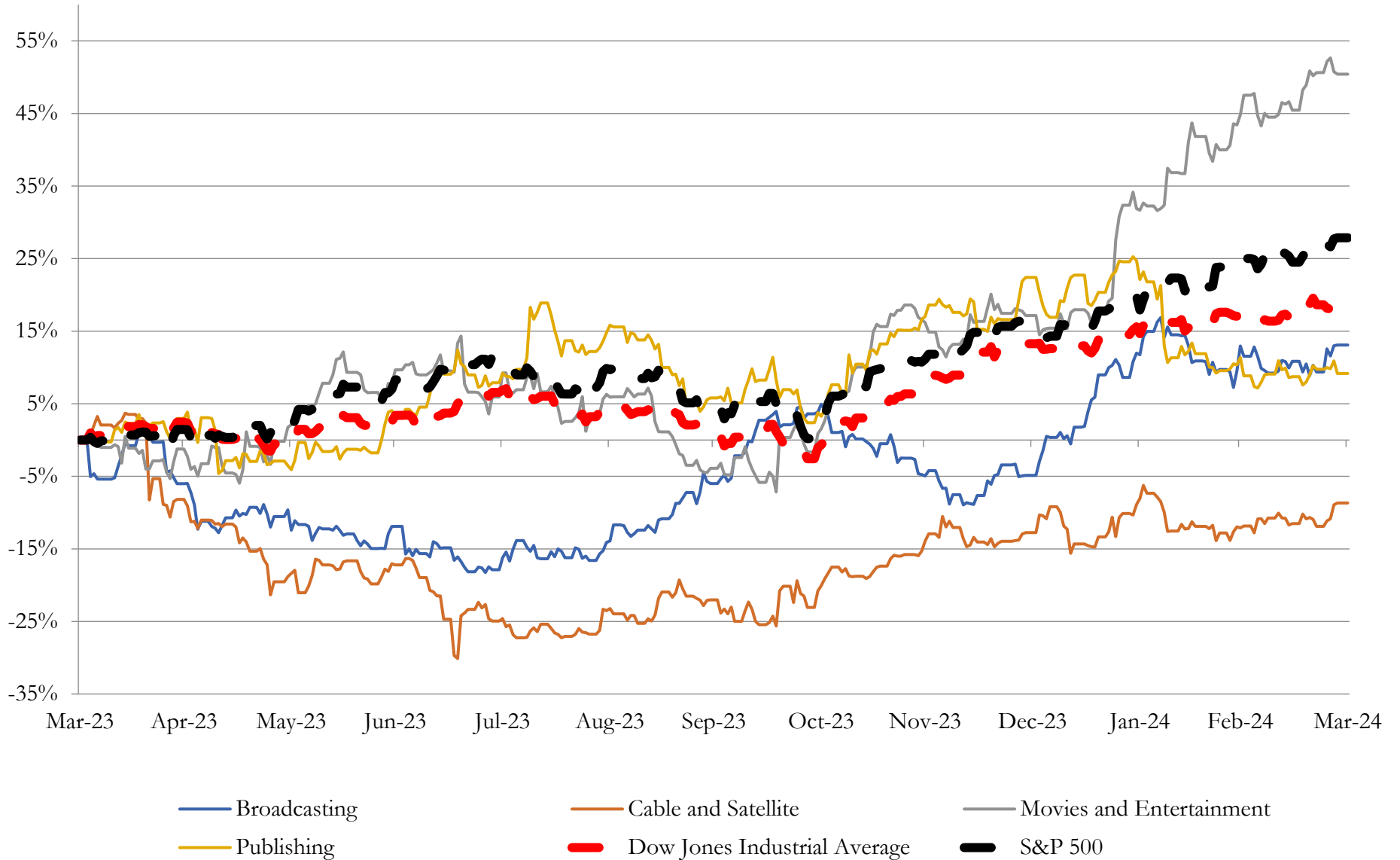
Company Name	Ticker	Return Profile					Trading Multiples		
		Return on Assets	Return on Equity	Revenue Growth	EBITDA Margin	EBITDA Growth	5-yr Beta	TEV / LTM Revenue	TEV / LTM EBITDA
Movies and Entertainment									
The Walt Disney Company	DIS	3.2%	3.9%	5.4%	17.5%	31.1%	1.4x	2.9x	16.3x
Netflix, Inc.	NFLX	10.0%	29.8%	9.5%	23.5%	43.6%	1.2x	7.4x	31.4x
AMC Entertainment Holdings, Inc.	AMC	0.2%	N/A	23.0%	8.3%	4088.4%	1.8x	1.9x	23.0x
Lions Gate Entertainment Corp.	LGF.A	2.0%	-175.5%	7.7%	11.7%	86.4%	1.3x	1.8x	15.3x
Cinemark Holdings, Inc.	CNK	4.8%	87.4%	24.9%	19.0%	84.4%	2.3x	1.6x	8.4x
	Mean	4.0%	-13.6%	14.1%	16.0%	866.8%	1.6x	3.1x	18.9x
	Median	3.2%	16.8%	9.5%	17.5%	84.4%	1.4x	1.9x	16.3x
Publishing									
The New York Times Company	NYT	7.2%	13.8%	5.3%	15.9%	16.3%	1.0x	2.7x	16.9x
The E.W. Scripps Company	SSP	2.5%	-57.7%	-6.5%	17.2%	-34.0%	1.9x	1.6x	9.5x
Gannett Co., Inc.	GCI	2.4%	-9.1%	-9.6%	9.2%	-15.7%	2.4x	0.6x	6.5x
Scholastic Corporation	SCHL	2.3%	4.8%	-2.8%	6.1%	-16.6%	1.1x	0.6x	10.5x
	Mean	3.6%	-12.0%	-3.4%	12.1%	-12.5%	1.6x	1.4x	10.8x
	Median	2.5%	-2.1%	-4.7%	12.6%	-16.2%	1.5x	1.1x	10.0x

Source: Capital IQ

3

LTM Equity Performance

Major Indexes



Source: Capital IQ

4

Recent M&A Activity

Last Twelve (12) Months as of March 31, 2024

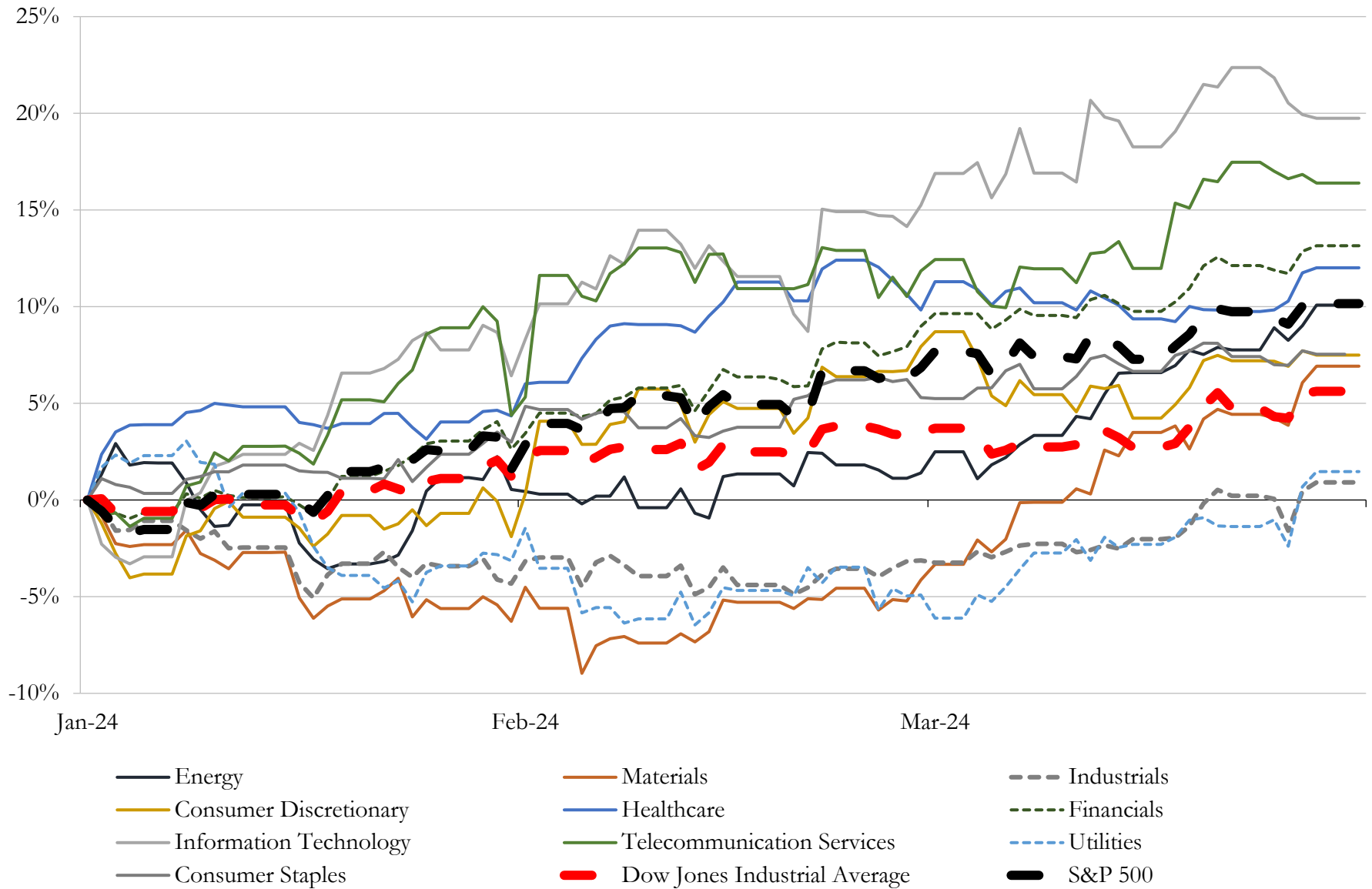
(USD in millions)

Close Date	Target	Acquirer	Implied TEV
Oct-23	Activision Blizzard, Inc.	Microsoft Corporation	\$68,987
Dec-23	DISH Network Corporation	EchoStar Corporation	\$25,111
Sep-23	World Wrestling Entertainment, Inc. (nka:World Wrestling Entertainment,	TKO Group Holdings, Inc.	\$9,300
Jul-23	Washington Commander's NFL franchise	N/A	\$6,050
Jul-23	Scopely, Inc.	Savvy Games Group	\$4,900
Oct-23	Simon & Schuster, LLC.	KKR & Co. Inc.; KKR North America Fund XIII SCSp	\$1,620
Jun-23	IMG Academy, LLC	BPEA EQT (nka:EQT Private Capital Asia); Nord Anglia Education, Inc.;	\$1,100
Sep-23	Quotient Technology Inc.	Neptune Retail Solutions	\$461
Nov-23	H Code Media, Inc.	Ariel Alternatives, LLC; Project Black, LP	\$400
Jul-23	Substantially all of the assets of Vice Media, LLC	Fortress Investment Group LLC; Soros Fund Management LLC; Monroe	\$350
Jan-24	QuintEvents, LLC	Formula One Group	\$313
Oct-23	Reliance Communications, Inc.	PowerSchool Holdings, Inc.	\$300
Jun-23	WBBH-TV in Fort Myers, Florida	Hearst Corporation	\$221
Jul-23	Mode Analytics, Inc.	ThoughtSpot, Inc.	\$200
Sep-23	Google Domains Assets	Squarespace, Inc.	\$180
Feb-24	Certain assets related to the business of Complex Media, Inc.	Commerce Media Holdings LLC	\$173
Jun-23	Giphy, Inc.	Shutterstock, Inc.	\$123
Feb-24	Broadcast Music, Inc.	New Mountain Capital, L.L.C.; CapitalG Management Company, LLC	\$110
Aug-23	Healthcare Information and Management Systems Society, Inc.	Informa Markets Limited	\$107
Jan-24	Waypoint/Marlin Connections/Primeline/CSSI Culinary/Ettros/Halverson	KeyImpact Sales & Systems, Inc.	\$100
Aug-23	Cloudco Entertainment, LLC	IVEST Consumer Partners	\$100
Sep-23	Chicago Womens Soccer Academy, LLC	N/A	\$60
Oct-23	Betches Media, LLC	LBG Media plc	\$54
Jul-23	Playmaker HQ LLC	Better Collective A/S	\$54
Oct-23	texts.com, LLC	Automattic Inc.	\$50
Nov-23	Movers and Shakers LLC	Stagwell Inc.	\$49
Jul-23	Honest Day's Work, Inc.	Latch, Inc.	\$45
Nov-23	System Era Softworks, Inc.	Devolver Digital, Inc.	\$40
Nov-23	Substantially all of the assets of S44 LLC	PopReach Corporation	\$40
Aug-23	Assets of KUSI-TV	Nexstar Media Group, Inc.	\$35

Source: Capital IQ

5 Change in Market Capitalization by Sector

Last Three (3) Months as of March 31, 2024

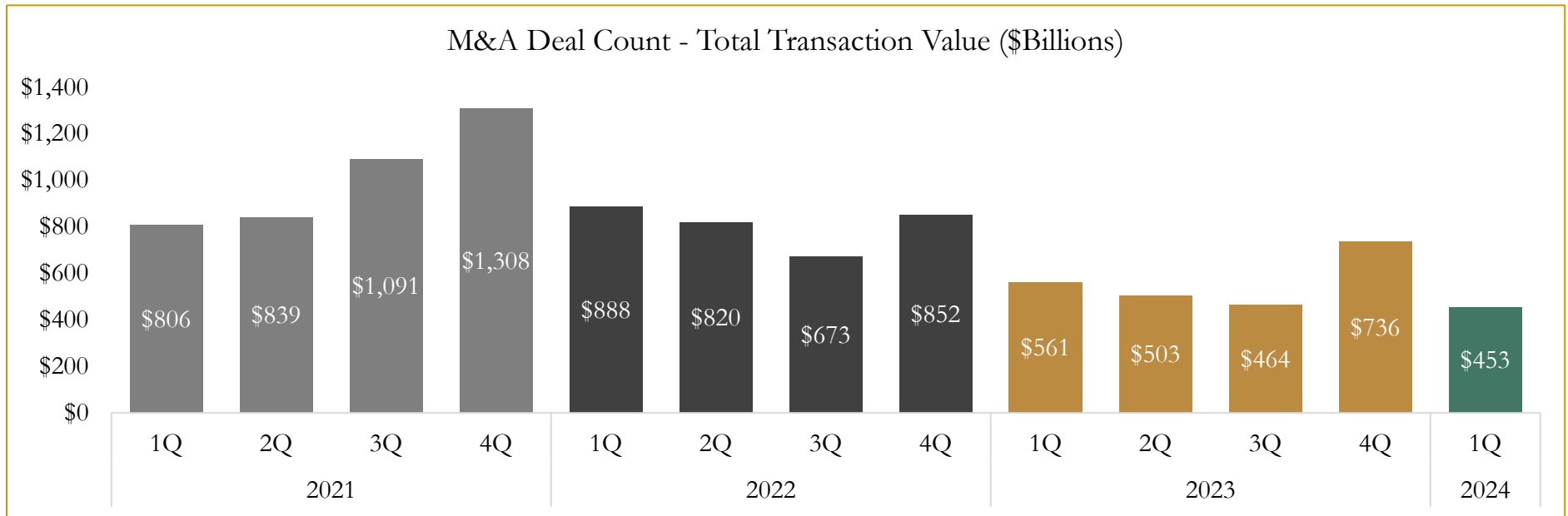
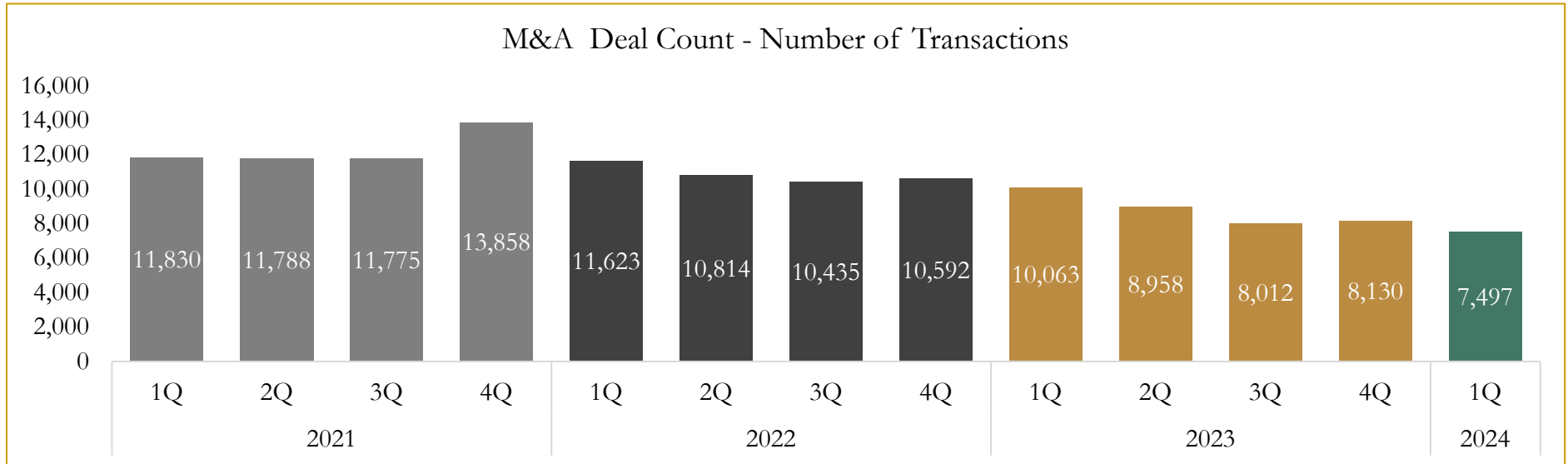


Source: Capital IQ

6

M&A Deal Flow Statistics

Last Three (3) Years as of March 31, 2024



Source: Capital IQ

Houlihan Capital is a leading, solutions-driven valuation, financial advisory and investment banking firm. We pride ourselves on being thought leaders in an ever-changing landscape.

Houlihan Capital is SOC-compliant, a FINRA and SIPC member and committed to the highest levels of professional ethics and standards.

Valuation & Financial Advisory

- **Portfolio Valuation (ASC 820)**
- **Complex & Illiquid Securities (Level 3)**
- **Cryptoasset /Blockchain Valuations**
 - Locked Token Valuations
- **Enterprise Valuations**
- **Fairness & Solvency Opinions**
 - SPAC Fairness
- **Estate & Gift Valuations**
- **Purchase Price Allocation (ASC 805)**
- **Goodwill Impairment Testing (ASC 350)**
- **Stock-based Compensation (ASC 718, IRC 409A)**

Investment Banking

- **Mergers & Acquisitions**
 - Sell-Side Advisory
 - Sale of Minority Ownership Positions
 - Leveraged Buyouts
 - Majority Recapitalizations
 - Corporate Divestitures
- **Corporate Financial Services**
 - Financial Modeling
 - Investor Presentation
 - Valuation Analysis
 - Strategic Advisory

For questions or inquiries regarding our services, please contact:

info@houlihancapital.com