

Industry Update

**Steel**

Q1 2024

## 1

# Financial Performance

## Size Profile, LTM Financials, Forward Estimates

(USD in millions, except per share data)

Company Name	Ticker	Size Profile				LTM Operating Data		Forward Estimates	
		Price at 03/31/24	% of 52 Week High	TEV	Total Assets	LTM Revenue	LTM EBITDA	2024 Est. Revenue	2024 Est. EBITDA
<b>Steel Industry</b>									
Nucor Corporation	NUE	\$197.90	99.4%	\$44,254	\$33,933	\$34,141	\$7,004	\$31,626	\$5,477
Steel Dynamics, Inc.	STLD	\$148.23	99.7%	\$22,511	\$15,027	\$18,596	\$3,512	\$18,122	\$2,840
Reliance, Inc.	RS	\$334.18	99.1%	\$18,336	\$10,480	\$14,806	\$1,985	\$14,238	\$1,797
Cleveland-Cliffs Inc.	CLF	\$22.74	99.8%	\$12,454	\$17,236	\$21,900	\$2,087	\$21,145	\$1,609
United States Steel Corporation	X	\$40.78	81.2%	\$10,014	\$20,451	\$18,053	\$1,919	\$16,587	\$1,764
ATI Inc.	ATI	\$51.17	98.5%	\$7,721	\$4,985	\$4,174	\$526	\$4,376	\$715
Commercial Metals Company	CMC	\$49.41	85.1%	\$5,670	\$6,639	\$8,800	\$1,387	\$8,348	\$1,351
Carpenter Technology Corporation	CRS	\$71.42	96.4%	\$4,679	\$3,159	\$2,724	\$346	\$2,962	\$485
Worthington Industries, Inc.	WOR	\$61.82	79.9%	\$3,559	\$3,477	\$4,701	\$367	\$4,467	\$570
Sims Limited	SGM	\$12.72	74.5%	\$2,955	\$4,764	\$8,370	\$90	\$8,280	\$428
Ryerson Holding Corporation	RYI	\$33.50	74.9%	\$1,854	\$2,570	\$5,109	\$294	\$4,615	\$243
SunCoke Energy, Inc.	SXC	\$11.27	98.2%	\$1,292	\$1,660	\$2,063	\$268	\$1,727	\$249
Haynes International, Inc.	HAYN	\$60.12	99.8%	\$869	\$701	\$605	\$78	\$655	\$96
ArcelorMittal S.A.	MT	\$27.58	91.5%	\$23,983	\$93,917	\$68,275	\$5,579	\$65,715	\$7,308
Universal Stainless & Alloy Products, Inc.	USAP	\$22.42	91.0%	\$338	\$357	\$286	\$33	\$326	\$48

Source: Capital IQ

## 2

## Valuation Metrics

## Return Profile, Trading Multiples

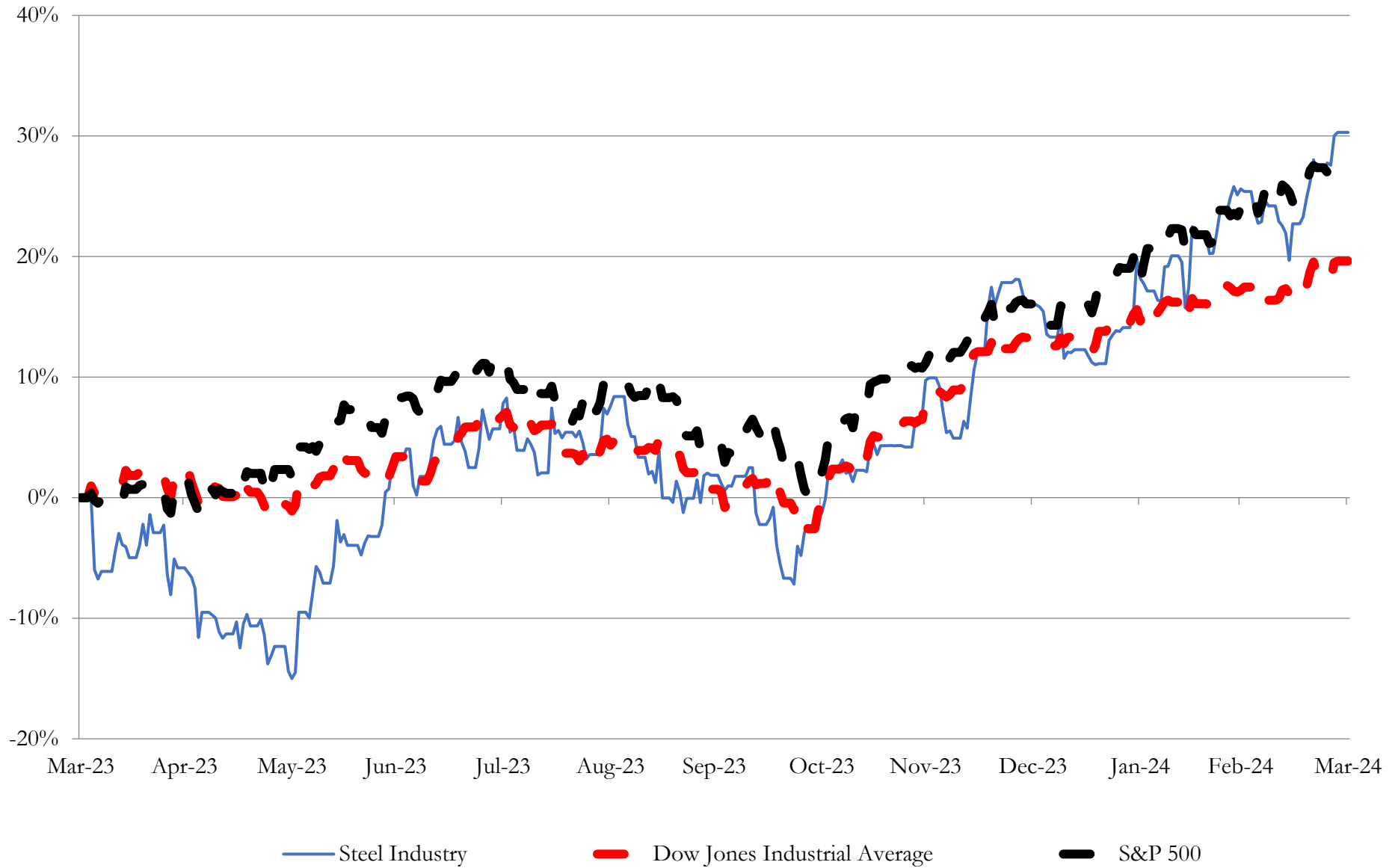
Company Name	Ticker	Return Profile					Trading Multiples		
		Return on Assets	Return on Equity	Revenue Growth	EBITDA Margin	EBITDA Growth	5-yr Beta	TEV / LTM Revenue	TEV / LTM EBITDA
<b>Steel Industry</b>									
Nucor Corporation	NUE	11.0%	22.3%	-14.1%	20.5%	-31.9%	1.6x	1.3x	6.3x
Steel Dynamics, Inc.	STLD	13.1%	27.8%	-13.8%	18.9%	-27.4%	1.5x	1.2x	6.4x
Reliance, Inc.	RS	10.4%	18.1%	-13.0%	13.4%	-28.0%	0.9x	1.2x	9.2x
Cleveland-Cliffs Inc.	CLF	3.9%	5.8%	-1.9%	9.5%	4.0%	2.0x	0.6x	6.0x
United States Steel Corporation	X	3.1%	8.3%	-14.3%	10.6%	-53.9%	2.1x	0.6x	5.2x
ATI Inc.	ATI	5.4%	32.1%	8.8%	12.6%	-22.5%	1.2x	1.8x	14.7x
Commercial Metals Company	CMC	11.3%	23.2%	-1.3%	15.8%	-7.2%	1.3x	0.6x	4.1x
Carpenter Technology Corporation	CRS	4.6%	10.3%	26.4%	12.7%	107.4%	1.5x	1.7x	13.5x
Worthington Industries, Inc.	WOR	4.5%	17.1%	-15.1%	7.8%	1.2%	1.4x	0.8x	9.7x
Sims Limited	SGM	-0.8%	5.6%	-5.4%	1.1%	-70.2%	1.3x	0.3x	31.2x
Ryerson Holding Corporation	RYI	5.9%	16.2%	-19.2%	5.7%	-53.7%	1.7x	0.4x	6.3x
SunCoke Energy, Inc.	SXC	4.7%	10.0%	4.6%	13.0%	-9.5%	1.2x	0.6x	4.8x
ArcelorMittal S.A.	MT	2.1%	1.8%	-14.5%	8.2%	-60.3%	0.0x	0.4x	4.6x
Haynes International, Inc.	HAYN	5.5%	10.1%	15.5%	12.9%	-7.1%	1.4x	1.4x	11.2x
Universal Stainless & Alloy Products, Inc.	USAP	2.4%	2.2%	41.5%	11.6%	168.0%	1.1x	1.2x	10.2x
	<b>Mean</b>	<b>5.8%</b>	<b>14.1%</b>	<b>-1.1%</b>	<b>11.6%</b>	<b>-6.1%</b>	<b>1.3x</b>	<b>0.9x</b>	<b>9.6x</b>
	<b>Median</b>	<b>4.7%</b>	<b>10.3%</b>	<b>-5.4%</b>	<b>12.6%</b>	<b>-22.5%</b>	<b>1.4x</b>	<b>0.8x</b>	<b>6.4x</b>

Source: Capital IQ

# 3

## LTM Equity Performance

Major Indexes



Source: Capital IQ

## 4

## Recent M&A Activity

*Last Twelve (12) Months as of March 31, 2024*

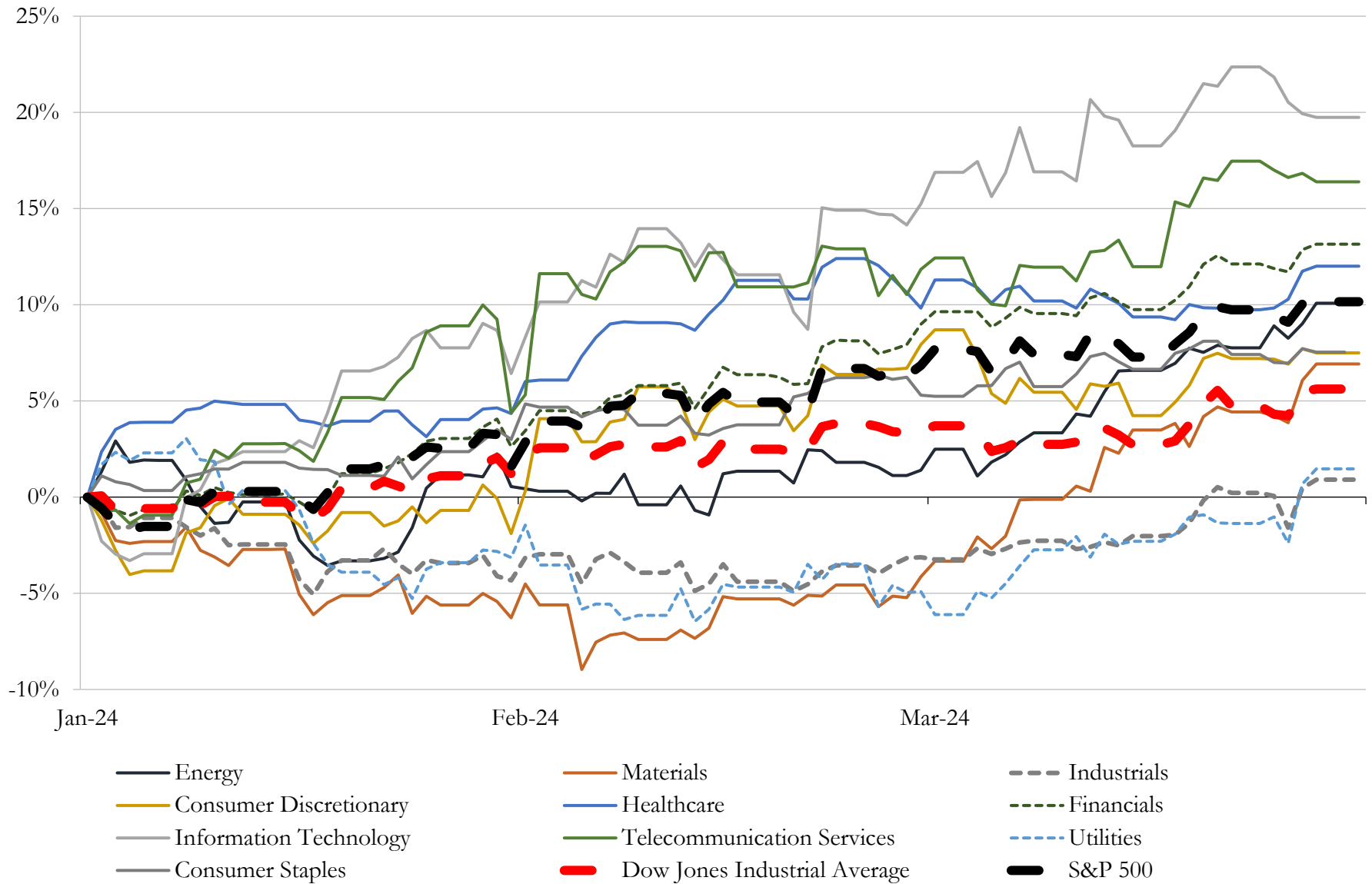
*(USD in millions)*

Close Date	Target	Acquirer	Implied TEV
Apr-23	Berg Europipe Holding Corp.	Borusan Mannesmann Pipe US Inc.	\$162
Nov-23	TSA Processing, Inc.	Ryerson Holding Corporation	\$38
Mar-24	Ealmh Holdings, LLC	Hill & Smith PLC	\$9
Mar-24	Maass Flange Corporation	Gulf Manufacturing, L.L.C.	NA
Jan-24	Metal Trades, Inc.	Keel Holdings, LLC	NA
Jan-24	Polytorx, LLC	FORTA Corporation	NA
Dec-23	Hynes Industries, Inc.	Crossplane Capital	NA
Dec-23	The Frog, Switch & Manufacturing Company	Cumberland County Historical Society	NA
Nov-23	FreshStor, Inc.	Boveda Inc.	NA
Aug-23	90,000 SF Facility in Mansfield, Ohio	Mill Steel Company, Inc.	NA
Jul-23	Tricon Wear Solutions LLC	Construction Forms, Inc.	NA
Jun-23	Pegasus Steel, LLC	Arlington Management Employees, LLC	NA
Jun-23	Gearco Incorporated	Sussex Wire, Inc.	NA
May-23	The Dotson Company, Inc.	MacLean Power, LLC	NA

Source: Capital IQ

# 5 Change in Market Capitalization by Sector

Last Three (3) Months as of March 31, 2024

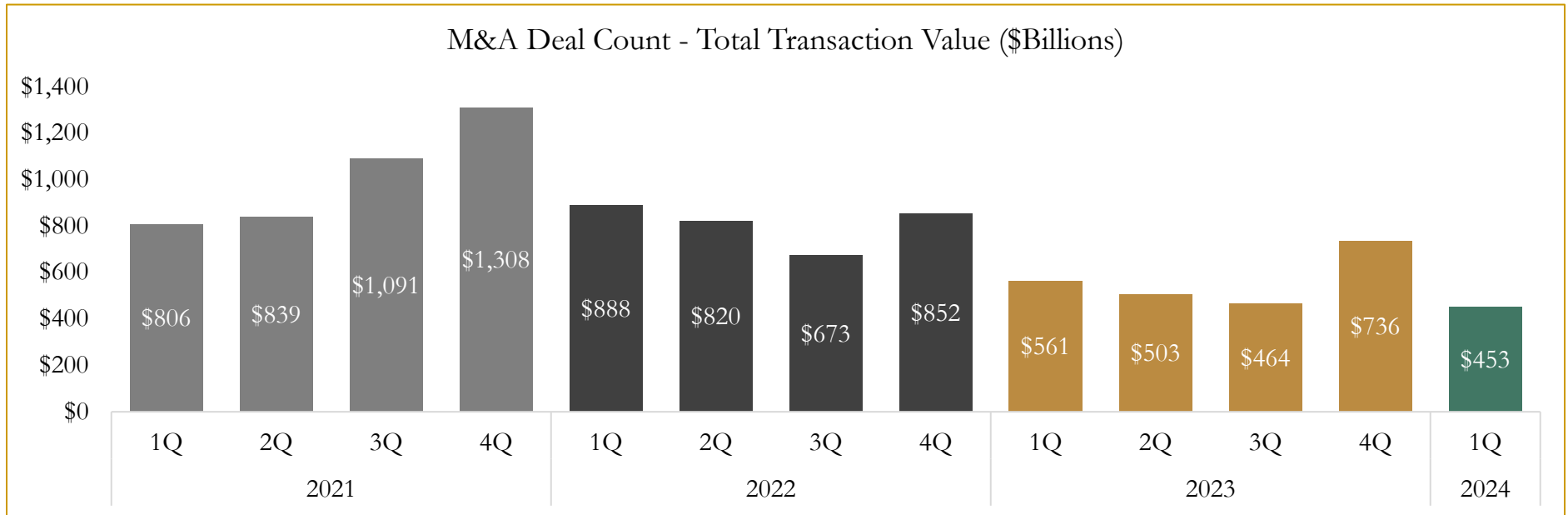
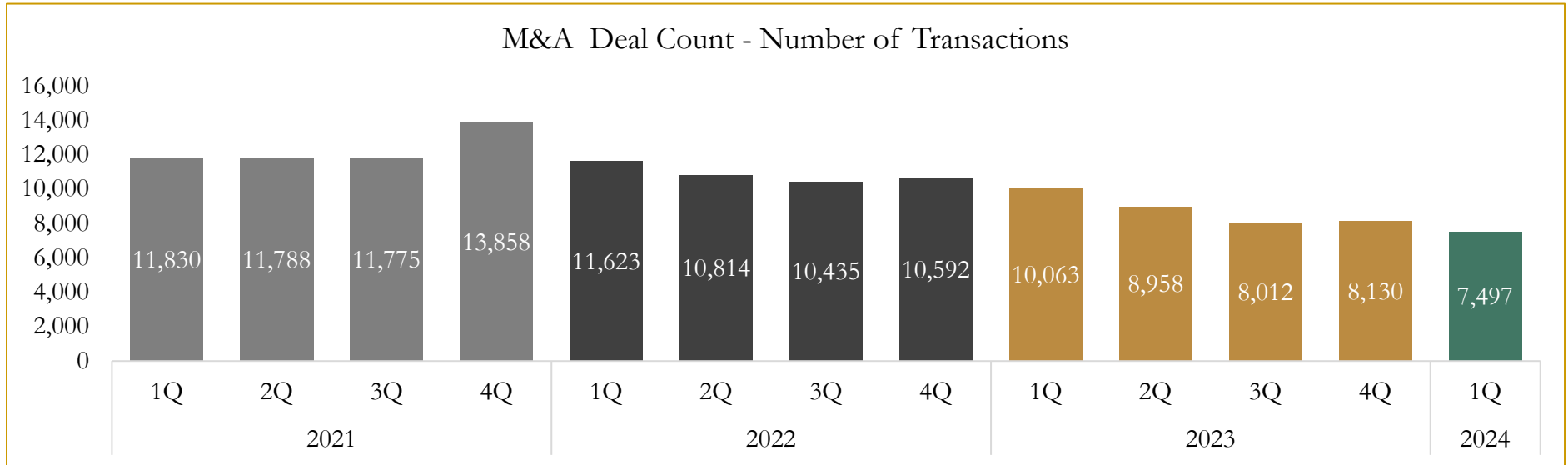


Source: Capital IQ

# 6

## M&A Deal Flow Statistics

Last Three (3) Years as of March 31, 2024



Source: Capital IQ

Houlihan Capital is a leading, solutions-driven valuation, financial advisory and investment banking firm. We pride ourselves on being thought leaders in an ever-changing landscape.

Houlihan Capital is SOC-compliant, a FINRA and SIPC member and committed to the highest levels of professional ethics and standards.

### Valuation & Financial Advisory

- **Portfolio Valuation (ASC 820)**
- **Complex & Illiquid Securities (Level 3)**
- **Cryptoasset /Blockchain Valuations**
  - Locked Token Valuations
- **Enterprise Valuations**
- **Fairness & Solvency Opinions**
  - SPAC Fairness
- **Estate & Gift Valuations**
- **Purchase Price Allocation (ASC 805)**
- **Goodwill Impairment Testing (ASC 350)**
- **Stock-based Compensation (ASC 718, IRC 409A)**

### Investment Banking

- **Mergers & Acquisitions**
  - Sell-Side Advisory
  - Sale of Minority Ownership Positions
  - Leveraged Buyouts
  - Majority Recapitalizations
  - Corporate Divestitures
- **Corporate Financial Services**
  - Financial Modeling
  - Investor Presentation
  - Valuation Analysis
  - Strategic Advisory

**For questions or inquiries regarding our services, please contact:**

**[info@houlihancapital.com](mailto:info@houlihancapital.com)**