



Industry Update  
**Chemicals**  
Q2 2024

## 1

# Financial Performance

## Size Profile, LTM Financials, Forward Estimates

(USD in millions, except per share data)

Company Name	Ticker	Size Profile			LTM Operating Data			Forward Estimates	
		Price at 06/30/24	% of 52 Week High	TEV	Total Assets	LTM Revenue	LTM EBITDA	2024 Est. Revenue	2024 Est. EBITDA
<b>Specialty Chemicals</b>									
The Sherwin-Williams Company	SHW	\$298.43	85.7%	\$99,286	\$23,734	\$23,008	\$4,379	\$23,229	\$4,583
Ecolab Inc.	ECL	\$238.00	96.8%	\$75,455	\$21,462	\$15,634	\$3,435	\$15,825	\$3,572
DuPont de Nemours, Inc.	DD	\$80.49	97.4%	\$39,449	\$36,553	\$12,058	\$2,894	\$12,448	\$3,095
PPG Industries, Inc.	PPG	\$125.89	82.3%	\$33,933	\$21,729	\$18,099	\$2,858	\$18,195	\$3,078
Celanese Corporation	CE	\$134.89	78.4%	\$26,483	\$25,812	\$10,554	\$1,871	\$10,609	\$2,611
<b>Commodity Chemicals</b>									
Dow Inc.	DOW	\$53.05	87.4%	\$51,274	\$58,526	\$43,031	\$5,248	\$43,596	\$5,889
LyondellBasell Industries N.V.	LYB	\$95.66	89.4%	\$41,534	\$37,064	\$41,037	\$4,640	\$40,723	\$5,093
Westlake Corporation	WLK	\$144.82	89.0%	\$21,824	\$21,083	\$12,123	\$1,905	\$12,439	\$2,522
<b>Diversified Chemicals</b>									
Eastman Chemical Company	EMN	\$97.97	92.4%	\$15,782	\$14,945	\$9,147	\$1,574	\$9,323	\$1,800
The Chemours Company	CC	\$22.57	57.8%	\$6,339	\$7,249	\$5,735	\$801	\$5,714	\$767
Huntsman Corporation	HUN	\$22.77	76.2%	\$5,737	\$7,317	\$5,953	\$294	\$6,125	\$454

Source: Capital IQ

## Financial Performance (cont.)

Size Profile, LTM Financials, Forward Estimates

(USD in millions, except per share data)

Company Name	Ticker	Size Profile			LTM Operating Data			Forward Estimates	
		Price at 06/30/24	% of 52 Week High	TEV	Total Assets	LTM Revenue	LTM EBITDA	2024 Est. Revenue	2024 Est. EBITDA
<b>Industrial Gases</b>									
Linde plc	LIN	\$438.81	91.9%	\$231,717	\$80,215	\$32,824	\$12,441	\$33,455	\$12,815
Air Products and Chemicals, Inc.	APD	\$258.05	83.9%	\$75,727	\$36,974	\$12,104	\$4,200	\$12,291	\$5,228
<b>Fertilizers &amp; Agricultural Chemicals</b>									
Corteva, Inc.	CTVA	\$53.94	91.8%	\$38,597	\$41,464	\$16,901	\$3,214	\$17,287	\$3,484
Nutrien Ltd.	NTR	\$50.91	73.7%	\$35,112	\$52,991	\$25,839	\$4,680	\$25,875	\$5,476
FMC Corporation	FMC	\$57.55	53.9%	\$11,505	\$12,131	\$4,084	\$677	\$4,388	\$910

Source: Capital IQ

## 2

## Valuation Metrics

## Return Profile, Trading Multiples

Company Name	Ticker	Return Profile						Trading Multiples	
		Return on Assets	Return on Equity	Revenue Growth	EBITDA Margin	EBITDA Growth	5-yr Beta	TEV / LTM Revenue	TEV / LTM EBITDA
<b>Specialty Chemicals</b>									
The Sherwin-Williams Company	SHW	10.0%	68.1%	0.2%	19.0%	8.9%	1.2x	4.3x	22.7x
Ecolab Inc.	ECL	7.3%	21.8%	5.9%	22.0%	18.4%	1.1x	4.8x	22.0x
DuPont de Nemours, Inc.	DD	2.8%	1.4%	-3.8%	24.0%	-4.4%	1.3x	1.9x	11.9x
PPG Industries, Inc.	PPG	6.5%	18.9%	1.1%	15.8%	9.8%	1.3x	N/A	N/A
Celanese Corporation	CE	2.8%	28.3%	2.5%	17.7%	12.2%	1.3x	2.5x	14.2x
	Mean	5.9%	27.7%	1.2%	19.7%	9.0%	1.2x	3.4x	17.7x
	Median	6.5%	21.8%	1.1%	19.0%	9.8%	1.3x	3.4x	18.1x
<b>Commodity Chemicals</b>									
Dow Inc.	DOW	2.8%	6.2%	-12.6%	12.2%	-8.7%	1.2x	1.2x	9.8x
LyondellBasell Industries N.V.	LYB	5.5%	17.5%	-4.6%	11.3%	2.0%	1.1x	1.0x	9.0x
Westlake Corporation	WLK	2.8%	2.9%	-12.5%	15.7%	-31.1%	1.2x	1.8x	11.5x
	Mean	3.7%	8.9%	-9.9%	13.1%	-12.6%	1.2x	1.3x	10.1x
	Median	2.8%	6.2%	-12.5%	12.2%	-8.7%	1.2x	1.2x	9.8x
<b>Diversified Chemicals</b>									
Eastman Chemical Company	EMN	4.6%	16.0%	-6.8%	17.2%	-0.4%	1.5x	1.7x	10.0x
The Chemours Company	CC	4.2%	14.9%	-8.9%	14.0%	-17.7%	1.8x	1.1x	7.9x
Huntsman Corporation	HUN	0.2%	-0.8%	-13.3%	4.9%	-48.3%	1.0x	1.0x	19.5x
	Mean	3.0%	10.0%	-9.7%	12.0%	-22.1%	1.4x	1.3x	12.5x
	Median	4.2%	14.9%	-8.9%	14.0%	-17.7%	1.5x	1.1x	10.0x

Source: Capital IQ

## Valuation Metrics (cont.)

### Return Profile, Trading Metrics

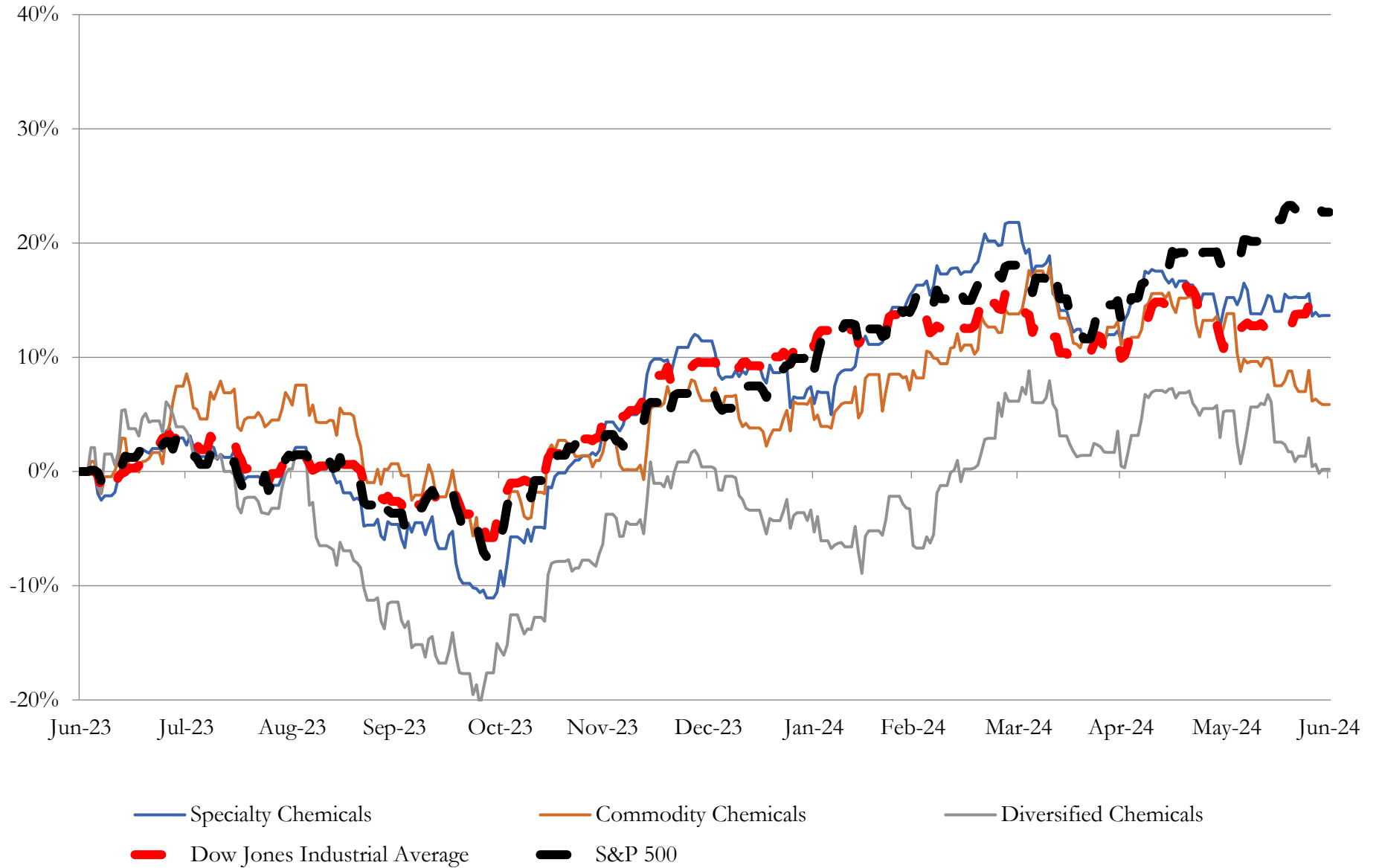
Company Name	Ticker	Return Profile					Trading Multiples		
		Return on Assets	Return on Equity	Revenue Growth	EBITDA Margin	EBITDA Growth	5-yr Beta	TEV / LTM Revenue	TEV / LTM EBITDA
<b>Industrial Gases</b>									
Linde plc	LIN	6.8%	16.2%	-0.8%	37.9%	9.0%	0.9x	7.1x	18.6x
Air Products and Chemicals, Inc.	APD	5.1%	16.2%	-6.7%	34.7%	5.4%	0.8x	6.2x	17.8x
	Mean	5.9%	16.2%	-3.8%	36.3%	7.2%	0.9x	6.6x	18.2x
	Median	5.9%	16.2%	-3.8%	36.3%	7.2%	0.9x	6.6x	18.2x
<b>Fertilizers &amp; Agricultural Chemicals</b>									
Nutrien Ltd.	NTR	3.3%	3.2%	-20.7%	18.1%	-40.6%	0.0x	1.4x	7.5x
Corteva, Inc.	CTVA	2.9%	3.4%	-3.6%	19.0%	-2.0%	0.8x	2.3x	11.9x
FMC Corporation	FMC	2.6%	36.8%	-23.8%	16.6%	-45.5%	0.8x	2.8x	16.7x
	Mean	2.9%	9.3%	0.9%	-5.8%	12.2%	0.5x	2.1x	12.1x
	Median	2.9%	3.8%	6.5%	7.3%	-1.0%	0.8x	2.3x	11.9x

Source: Capital IQ

# 3

## LTM Equity Performance

### Major Indexes



Source: Capital IQ

## 4

## Recent M&amp;A Activity

Last Twelve (12) Months as of June 30, 2024

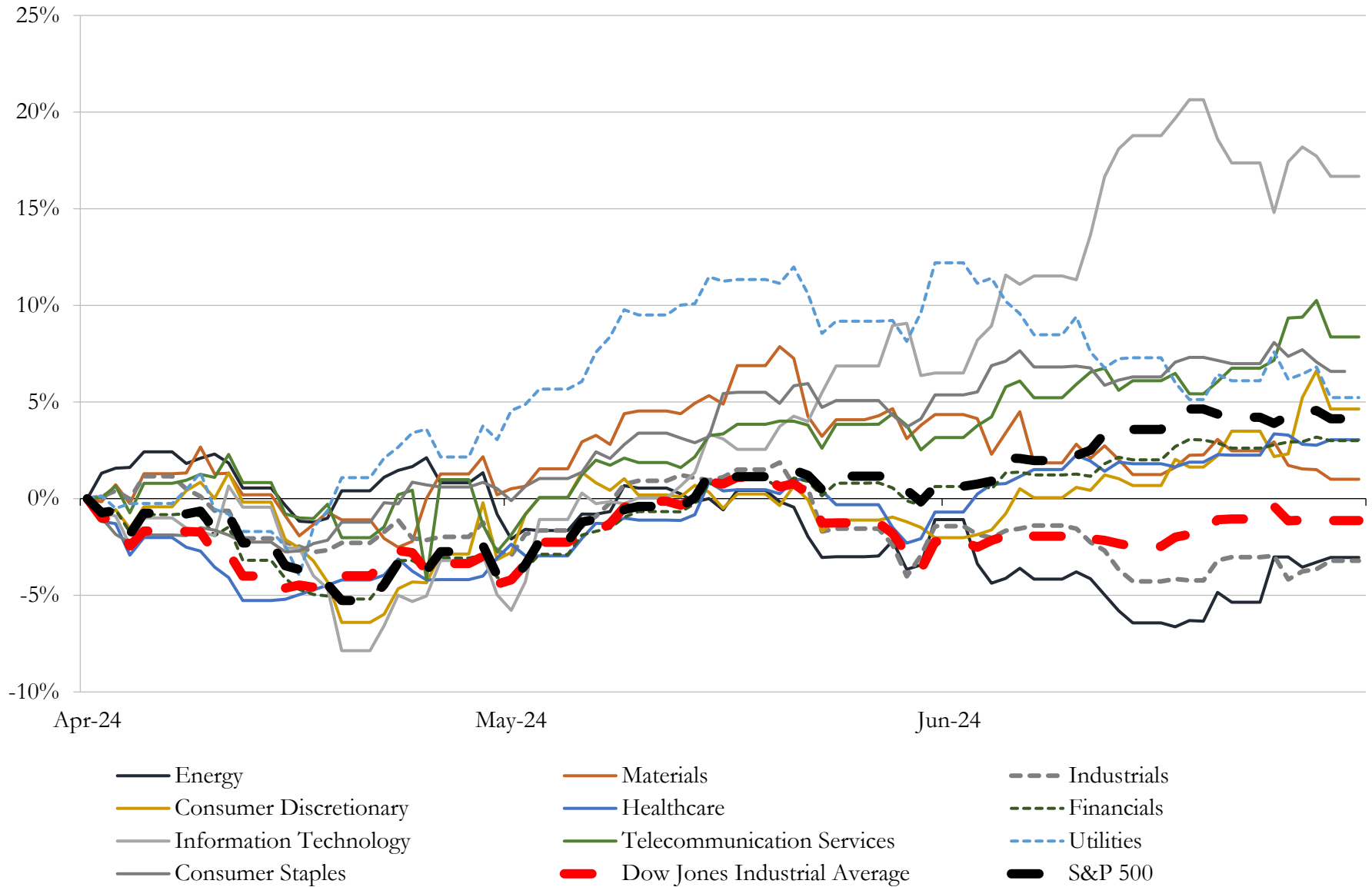
(USD in millions)

Close Date	Target	Acquirer	Implied TEV
Nov-23	Chase Corporation	KKR & Co. Inc.; North America XIII Fund	\$1,330
May-24	Ethylene Oxide & Derivatives (EO&D) business of LyondellBasell Industries	Ineos Oxide Ltd.	\$700
Oct-23	KMG Chemicals, Inc. (nka:FUJIFILM Electronic Materials Process	FUJIFILM Holdings America Corporation	\$700
Jan-24	American Pacific Corporation	NewMarket Corporation	\$681
Dec-23	Texas City Operations of Eastman Chemical Company	INEOS Acetyls Americas Limited	\$452
Mar-24	Flowchem LLC / Sealweld Corporation / Valves Inc. of Texas	SCF Partners, Inc.	\$285
May-24	ND Industries, Inc.	H.B. Fuller Company	\$256
Dec-23	Verdant Specialty Solutions LLC	Samyang Specialty Solutions LLC	\$250
Nov-23	Vycom Plastics, Inc.	Plaskolite, LLC	\$140
Aug-23	Glycolic Acid business of The Chemours Company	PureTech Scientific Inc.	\$138
Apr-24	Sonoco Protective Solutions, Inc.	Black Diamond Capital Management, L.L.C.	\$80
Jan-24	Substantially all of the assets of Element, LLC	Cardinal Ethanol, LLC	\$44
Nov-23	Star Thermoplastic Alloys & Rubbers, Inc.	HEXPOL AB (publ)	\$27
Oct-23	Substantially all the assets of The Miami Products & Chemical Company	Hawkins, Inc.	\$16
Apr-24	Reed & Perrine Sales, Inc	The Andersons, Inc.	\$7
Dec-23	Toppen Health Inc.	Aion Therapeutic Inc.	\$5
May-24	Feed Earth Now, LLC	Digital Utilities Ventures, Inc.	\$4
Jul-23	EcoTech Enterprises, Inc.	Hawkins, Inc.	\$3
Jun-24	Auto Care business of KIK Custom Products Inc.	Recochem Inc.	NA
Jun-24	Thermal Remediation, Inc.	GreenTech Heat Solutions LLC	NA
Jun-24	Superior Composites Company, LLC	St. Cloud Capital, LLC; Liberty Lane Partners II, LLC	NA
Jun-24	Bioenergy enzymes business of BASF SE	Lallemand Specialties, Inc.; Danstar Ferment AG	NA
May-24	Uniforce	Manufacturing Corporation of America, Inc.	NA
May-24	Clark Foam Products Corporation	The Specialized Packaging Group, Inc.	NA
May-24	ModuCoatings	Lamons Gasket Company	NA
May-24	Greenfield Manufacturing Incorporated	Protex International SA	NA
May-24	Assets of SYSTEX Products Arkansas Company (SPARC)	Denso Manufacturing Arkansas, Inc.	NA
May-24	Approved Color, LLC	Chroma Color Corporation	NA
May-24	Reagent Chemical & Research, Inc.	Wynnchurch Capital, L.P	NA
May-24	NPX One, LLC	Breck Partners LLC	NA

Source: Capital IQ

# 5 Change in Market Capitalization by Sector

Last Three (3) Months as of June 30, 2024



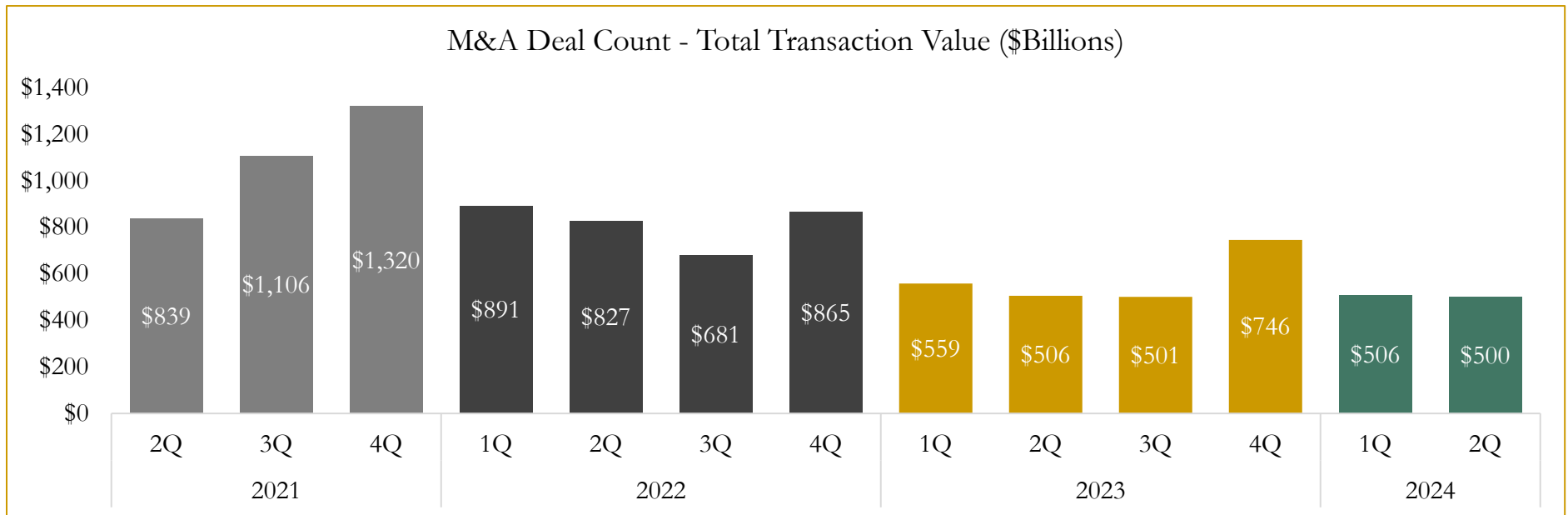
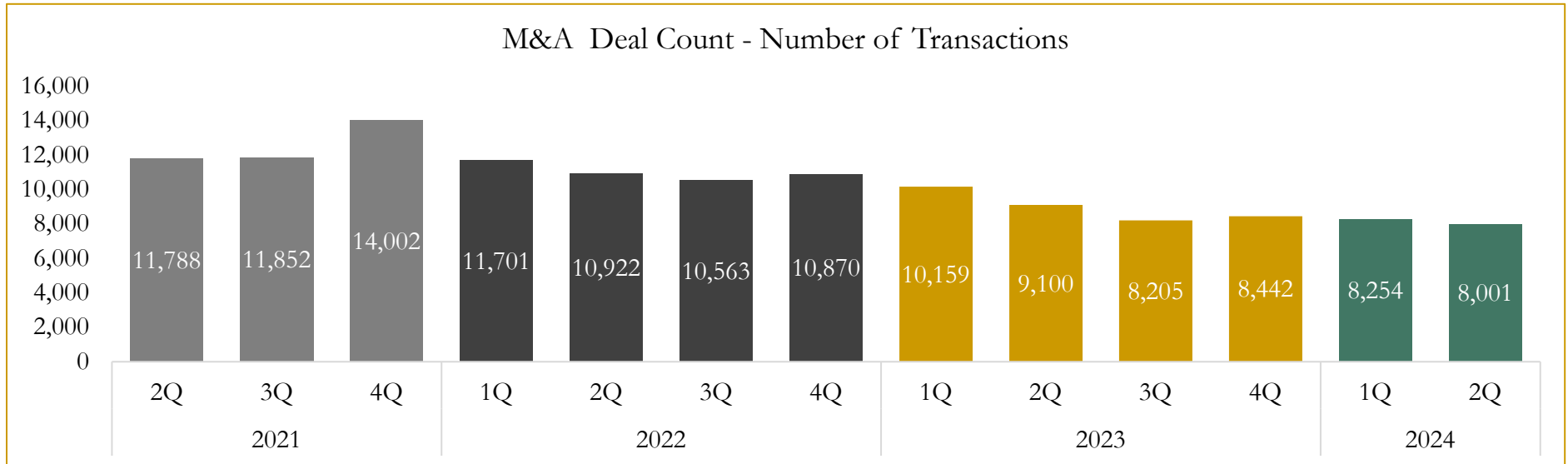
Source: Capital IQ



# 6

## M&A Deal Flow Statistics

Last Three (3) Years as of June 30, 2024



Source: Capital IQ

Houlihan Capital is a leading, solutions-driven valuation, financial advisory and investment banking firm. We pride ourselves on being thought leaders in an ever-changing landscape.

Houlihan Capital is SOC-compliant, a FINRA and SIPC member and committed to the highest levels of professional ethics and standards.

### Valuation & Financial Advisory

- **Portfolio Valuation (ASC 820)**
- **Complex & Illiquid Securities (Level 3)**
- **Cryptoasset /Blockchain Valuations**
  - Locked Token Valuations
- **Enterprise Valuations**
- **Fairness & Solvency Opinions**
  - SPAC Fairness
- **Estate & Gift Valuations**
- **Purchase Price Allocation (ASC 805)**
- **Goodwill Impairment Testing (ASC 350)**
- **Stock-based Compensation (ASC 718, IRC 409A)**

### Investment Banking

- **Mergers & Acquisitions**
  - Sell-Side Advisory
  - Sale of Minority Ownership Positions
  - Leveraged Buyouts
  - Majority Recapitalizations
  - Corporate Divestitures
- **Corporate Financial Services**
  - Financial Modeling
  - Investor Presentation
  - Valuation Analysis
  - Strategic Advisory

**For questions or inquiries regarding our services, please contact:**

**[info@houlihancapital.com](mailto:info@houlihancapital.com)**