



Industry Update
Chemicals
Q3 2024

1

Financial Performance

Size Profile, LTM Financials, Forward Estimates

(USD in millions, except per share data)

Company Name	Ticker	Size Profile			LTM Operating Data		Forward Estimates		
		Price at 09/30/24	% of 52 Week High	TEV	Total Assets	LTM Revenue	LTM EBITDA	2024 Est. Revenue	2024 Est. EBITDA
Specialty Chemicals									
The Sherwin-Williams Company	SHW	\$381.67	99.1%	\$106,789	\$23,968	\$23,054	\$4,400	\$23,130	\$4,507
Ecolab Inc.	ECL	\$255.33	99.5%	\$76,971	\$22,102	\$15,675	\$3,539	\$15,771	\$3,579
DuPont de Nemours, Inc.	DD	\$89.11	98.9%	\$41,771	\$37,461	\$12,192	\$2,931	\$12,408	\$3,118
PPG Industries, Inc.	PPG	\$132.46	87.6%	\$34,925	\$21,858	\$18,030	\$2,870	\$17,913	\$3,015
Celanese Corporation	CE	\$135.96	79.0%	\$22,830	\$25,892	\$10,479	\$1,745	\$10,378	\$2,451
Commodity Chemicals									
Dow Inc.	DOW	\$54.63	90.0%	\$48,806	\$59,389	\$43,180	\$4,852	\$43,211	\$5,550
LyondellBasell Industries N.V.	LYB	\$95.90	89.6%	\$37,975	\$37,263	\$40,734	\$4,421	\$40,402	\$4,653
Westlake Corporation	WLK	\$150.29	92.4%	\$19,269	\$21,109	\$12,125	\$1,815	\$12,451	\$2,435
Diversified Chemicals									
Eastman Chemical Company	EMN	\$111.95	97.8%	\$16,338	\$15,060	\$9,344	\$1,684	\$9,391	\$1,788
The Chemours Company	CC	\$20.32	62.1%	\$6,666	\$7,463	\$5,749	\$786	\$5,754	\$774
Huntsman Corporation	HUN	\$24.20	89.6%	\$5,350	\$7,334	\$5,987	\$312	\$6,043	\$425

Source: Capital IQ

Financial Performance (cont.)

Size Profile, LTM Financials, Forward Estimates

(USD in millions, except per share data)

Company Name	Ticker	Size Profile			LTM Operating Data		Forward Estimates		
		Price at 09/30/24	% of 52 Week High	TEV	Total Assets	LTM Revenue	LTM EBITDA	2024 Est. Revenue	2024 Est. EBITDA
Industrial Gases									
Linde plc	LIN	\$476.86	98.7%	\$235,104	\$82,546	\$33,025	\$12,581	\$33,298	\$12,841
Air Products and Chemicals, Inc.	APD	\$297.74	98.6%	\$81,982	\$36,974	\$12,104	\$4,200	\$12,273	\$5,175
Fertilizers & Agricultural Chemicals									
Corteva, Inc.	CTVA	\$58.79	99.5%	\$45,651	\$41,464	\$16,901	\$3,214	\$17,229	\$3,463
Nutrien Ltd.	NTR	\$48.06	76.9%	\$37,215	\$52,991	\$25,839	\$4,680	\$25,645	\$5,389
FMC Corporation	FMC	\$65.94	96.0%	\$11,758	\$12,219	\$4,168	\$703	\$4,371	\$905

Source: Capital IQ

2

Valuation Metrics

Return Profile, Trading Multiples

Company Name	Ticker	Return Profile					Trading Multiples		
		Return on Assets	Return on Equity	Revenue Growth	EBITDA Margin	EBITDA Growth	5-yr Beta	TEV / LTM Revenue	TEV / LTM EBITDA
Specialty Chemicals									
The Sherwin-Williams Company	SHW	10.1%	64.5%	0.1%	19.1%	5.4%	1.2x	4.6x	24.3x
Ecolab Inc.	ECL	7.4%	25.2%	4.1%	22.6%	18.2%	1.1x	4.9x	21.8x
DuPont de Nemours, Inc.	DD	2.8%	2.2%	-0.7%	24.0%	1.1%	1.3x	1.9x	12.2x
PPG Industries, Inc.	PPG	6.7%	19.1%	-0.3%	15.9%	5.6%	1.3x	N/A	N/A
Celanese Corporation	CE	2.5%	15.1%	-2.2%	16.7%	2.0%	1.3x	2.2x	13.1x
	Mean	5.9%	25.2%	0.2%	19.7%	6.5%	1.2x	3.4x	17.8x
	Median	6.7%	19.1%	-0.3%	19.1%	5.4%	1.3x	3.4x	17.4x
Commodity Chemicals									
Dow Inc.	DOW	2.3%	5.9%	-5.8%	11.2%	-8.5%	1.2x	1.1x	10.1x
LyondellBasell Industries N.V.	LYB	5.1%	15.9%	-1.6%	10.9%	-9.0%	1.1x	0.9x	8.6x
Westlake Corporation	WLK	2.5%	1.3%	-6.9%	15.0%	-31.1%	1.2x	1.6x	10.6x
	Mean	3.3%	7.7%	-4.8%	12.4%	-16.2%	1.2x	1.2x	9.8x
	Median	2.5%	5.9%	-5.8%	11.2%	-9.0%	1.2x	1.1x	10.1x
Diversified Chemicals									
Eastman Chemical Company	EMN	5.0%	15.9%	-0.3%	18.0%	10.9%	1.5x	1.7x	9.7x
The Chemours Company	CC	4.0%	11.0%	-4.2%	13.7%	-10.8%	1.7x	1.2x	8.5x
Huntsman Corporation	HUN	0.3%	-1.3%	-5.8%	5.2%	-28.9%	1.0x	0.9x	17.1x
	Mean	3.1%	8.5%	-3.5%	12.3%	-9.6%	1.4x	1.3x	11.8x
	Median	4.0%	11.0%	-4.2%	13.7%	-10.8%	1.5x	1.2x	9.7x

Source: Capital IQ

Valuation Metrics (cont.)

Return Profile, Trading Metrics

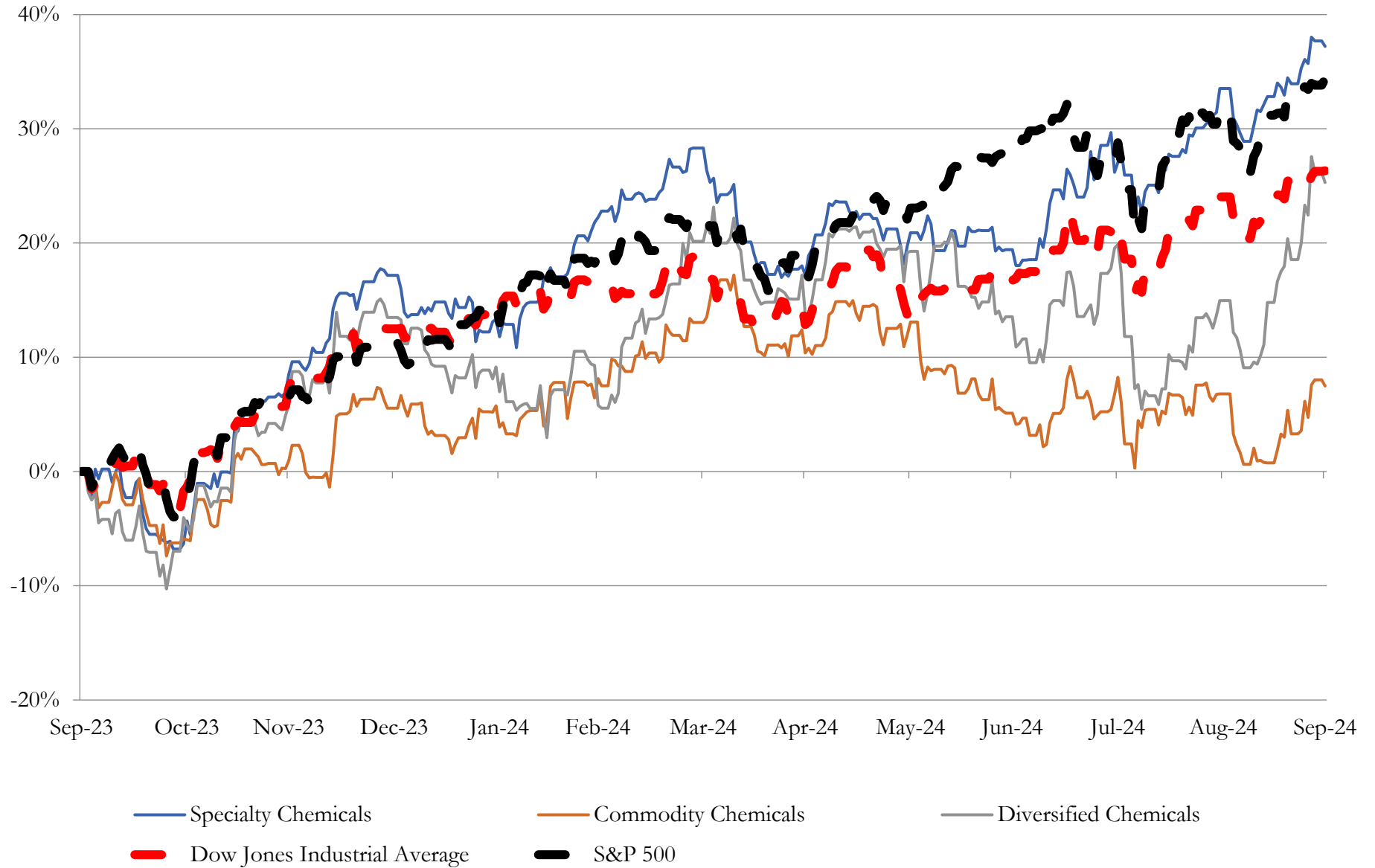
Company Name	Ticker	Return Profile					Trading Multiples		
		Return on Assets	Return on Equity	Revenue Growth	EBITDA Margin	EBITDA Growth	5-yr Beta	TEV / LTM Revenue	TEV / LTM EBITDA
Industrial Gases									
Linde plc	LIN	6.8%	16.2%	1.8%	38.1%	7.1%	0.9x	7.1x	18.7x
Air Products and Chemicals, Inc.	APD	5.1%	16.2%	-6.7%	34.7%	5.4%	0.8x	6.8x	19.5x
	Mean	6.0%	16.2%	-2.5%	36.4%	6.2%	0.9x	6.9x	19.1x
	Median	6.0%	16.2%	-2.5%	36.4%	6.2%	0.9x	6.9x	19.1x
Fertilizers & Agricultural Chemicals									
Nutrien Ltd.	NTR	3.3%	3.2%	-20.7%	18.1%	-40.6%	0.0x	1.4x	8.0x
Corteva, Inc.	CTVA	2.9%	3.4%	-3.6%	19.0%	-2.0%	0.8x	2.7x	14.2x
FMC Corporation	FMC	2.8%	38.5%	-16.0%	16.9%	-39.1%	0.9x	2.8x	16.7x
	Mean	3.0%	9.6%	2.3%	-4.6%	13.5%	0.5x	2.3x	13.0x
	Median	2.9%	4.0%	6.6%	7.4%	-1.0%	0.8x	2.7x	14.2x

Source: Capital IQ

3

LTM Equity Performance

Major Indexes



Source: Capital IQ

4

Recent M&A Activity

Last Twelve (12) Months as of September 30, 2024

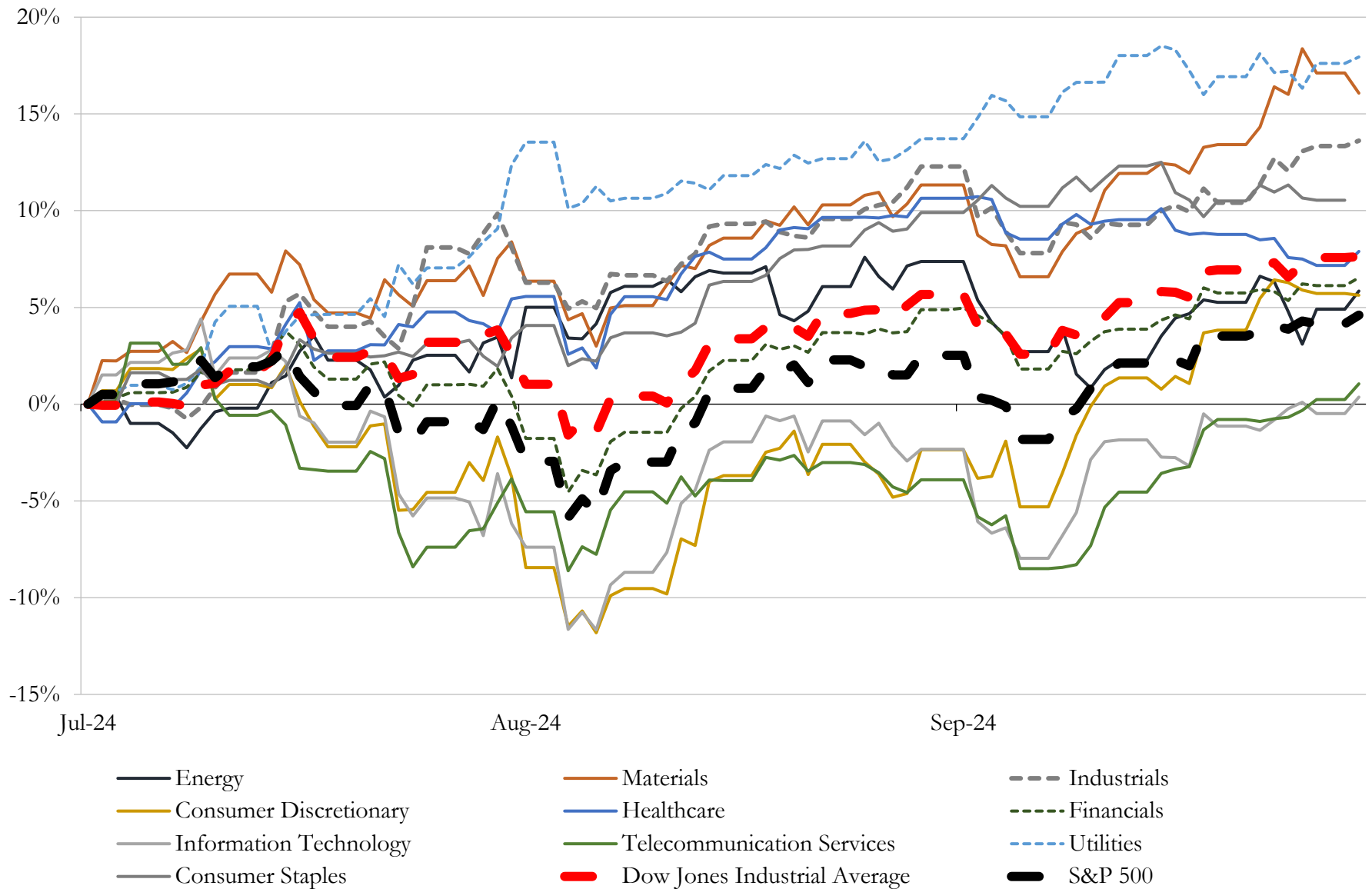
(USD in millions)

Close Date	Target	Acquirer	Implied TEV
Aug-24	Iowa Fertilizer Company, LLC	Koch Fertilizer, LLC	\$3,600
Sep-24	1.1 million metric tonnes Clean Ammonia project under construction in	Woodside Energy Group Ltd	\$2,350
Apr-24	Cyanco Corporation	Orica Limited	\$1,638
Nov-23	Chase Corporation	KKR & Co. Inc.; North America XIII Fund	\$1,330
Aug-24	Global Surgical Solutions Business of Ecolab Inc.	Medline Industries, Inc.	\$950
May-24	Ethylene Oxide & Derivatives (EO&D) business of LyondellBasell Industries	Ineos Oxide Ltd.	\$700
Jan-24	American Pacific Corporation	NewMarket Corporation	\$681
Dec-23	Texas City Operations of Eastman Chemical Company	INEOS Acetyls Americas Limited	\$452
Jul-24	Louisiana Pigment Co.,L.P.	Kronos Worldwide, Inc.	\$385
Jul-24	CoverFlexx Group	Axalta Coating Systems Ltd.	\$295
Mar-24	Flowchem LLC / Sealweld Corporation / Valves Inc. of Texas	SCF Partners, Inc.	\$285
May-24	ND Industries, Inc.	H.B. Fuller Company	\$256
Dec-23	Verdant Specialty Solutions LLC	Samyang Specialty Solutions LLC	\$250
Aug-24	Circulus Holdings, PBLLC	Dow Inc.	\$130
Apr-24	Kwik Bond Polymers, LLC	Sika AG	\$117
Apr-24	Sonoco Protective Solutions, Inc.	Black Diamond Capital Management, L.L.C.	\$80
Apr-24	Controlled Fluidics LLC	Ingersoll Rand Inc.	\$52
Jan-24	Substantially all of the assets of Element, LLC	Cardinal Ethanol, LLC	\$44
Jul-24	Welch Fluorocarbon Inc.	UFP Technologies, Inc.	\$41
Aug-24	Plant Health Care plc	PI Industries Limited	\$40
Nov-23	Star Thermoplastic Alloys & Rubbers, Inc.	HEXPOL AB (publ)	\$27
Jul-24	Industrial Molding Corporation	Davalor Mold Corporation	\$17
Apr-24	Reed & Perrine Sales, Inc	The Andersons, Inc.	\$7
Dec-23	Toppen Health Inc.	Aion Therapeutic Inc.	\$5
May-24	Feed Earth Now, LLC	Digital Utilities Ventures, Inc.	\$4
Sep-24	Adhesive Assets of I&L Products, Inc.	IPS Corporation	NA
Sep-24	Calcium Products, Inc.	HBM Holdings Company	NA
Sep-24	Gotham Refining Chemical Corp.	Water Engineering, Inc.	NA
Sep-24	Former Southern States CoOp Fertilizer facility	Kentucky Fertilizer LLC	NA
Sep-24	United Solutions, Inc.	Nursery Supplies, Inc.	NA

Source: Capital IQ

5 Change in Market Capitalization by Sector

Last Three (3) Months as of September 30, 2024

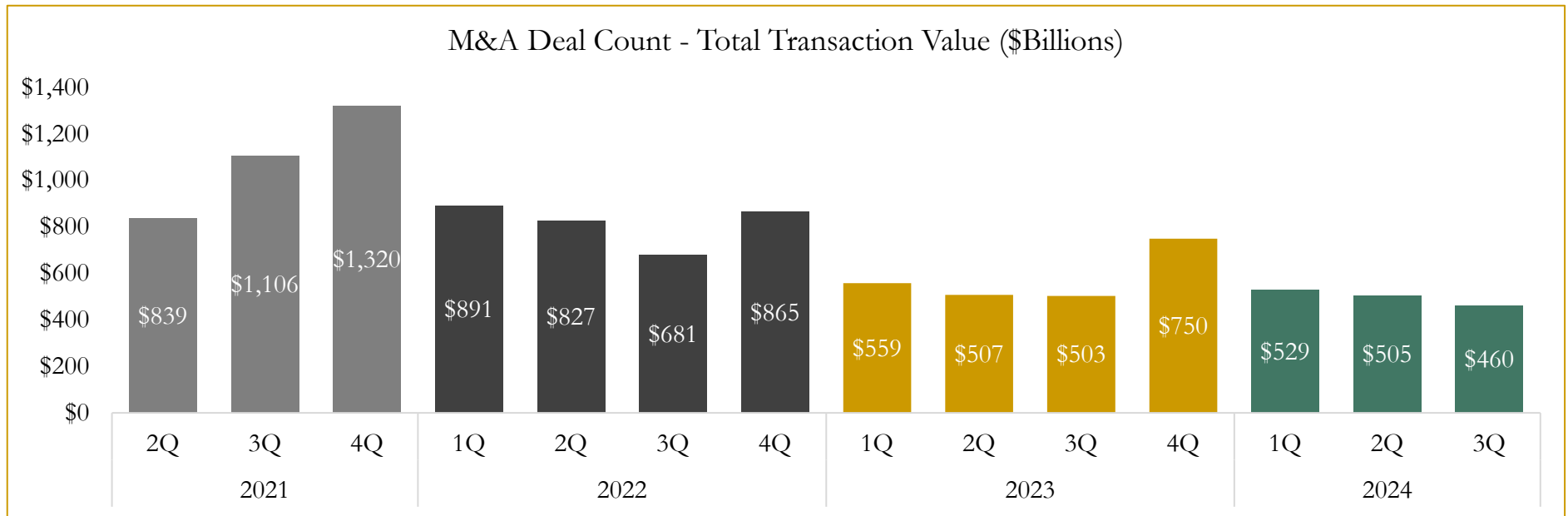
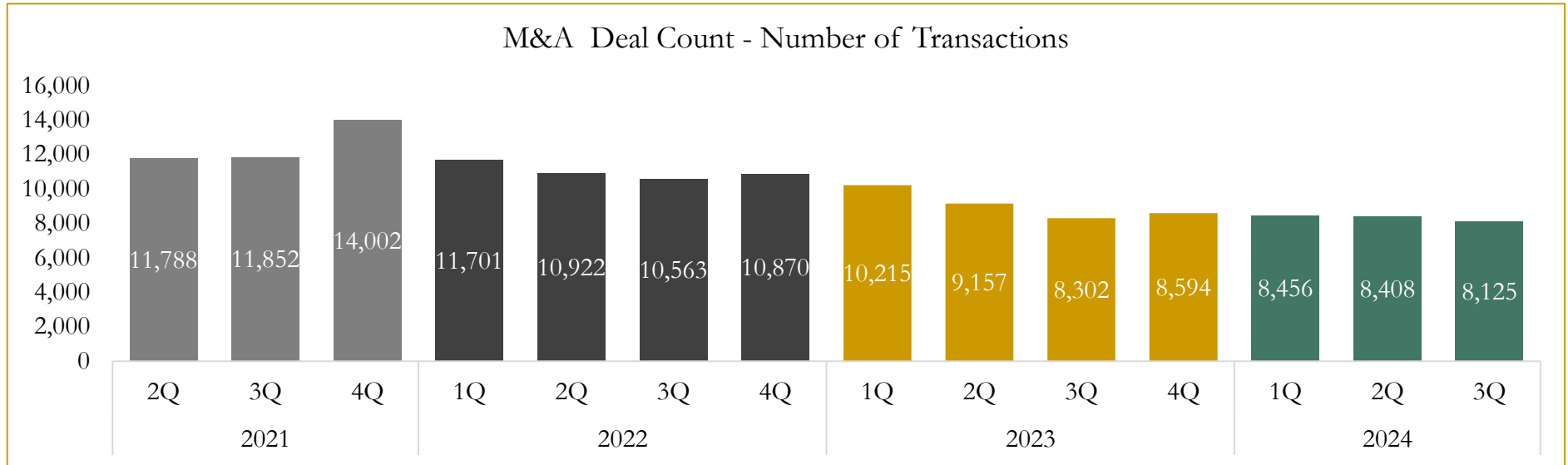


Source: Capital IQ

6

M&A Deal Flow Statistics

Last Three (3) Years as of September 30, 2024



Source: Capital IQ

Houlihan Capital is a leading, solutions-driven valuation, financial advisory and investment banking firm. We pride ourselves on being thought leaders in an ever-changing landscape.

Houlihan Capital is SOC-compliant, a FINRA and SIPC member and committed to the highest levels of professional ethics and standards.

Valuation & Financial Advisory

- **Portfolio Valuation (ASC 820)**
- **Complex & Illiquid Securities (Level 3)**
- **Cryptoasset /Blockchain Valuations**
 - Locked Token Valuations
- **Enterprise Valuations**
- **Fairness & Solvency Opinions**
 - SPAC Fairness
- **Estate & Gift Valuations**
- **Purchase Price Allocation (ASC 805)**
- **Goodwill Impairment Testing (ASC 350)**
- **Stock-based Compensation (ASC 718, IRC 409A)**

Investment Banking

- **Mergers & Acquisitions**
 - Sell-Side Advisory
 - Sale of Minority Ownership Positions
 - Leveraged Buyouts
 - Majority Recapitalizations
 - Corporate Divestitures
- **Corporate Financial Services**
 - Financial Modeling
 - Investor Presentation
 - Valuation Analysis
 - Strategic Advisory

For questions or inquiries regarding our services, please contact:

info@houlihancapital.com